

SHADYS Install Instructions
Exterior Canopy Attachment For
Factory Standard Canopies
Club Car DS Golf Cars

Step 1

Clean canopy where Shadys will attach with alcohol wipe and allow to dry. Apply primer stick to area where Shadys will attach and allow to dry for 5 minutes.



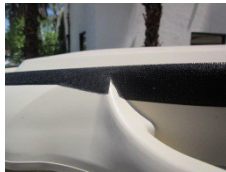
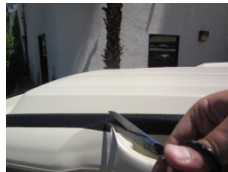
Step 2

Attach Velcro strip to back of canopy as shown. Attach Shadys.



Step 3

Attach 2" Velcro strip along side and cut to form around handle as show.



Step 4

Attach side of Shadys to canopy.



Step 5

Lift seat, attach Velcro pad to smooth area along inside panel. Attach Shadys strap to Velcro pad and lower seat.



